

The logo features the letters 'RTX' in a large, bold, sans-serif font. The 'R' is blue, the 'T' is lime green, and the 'X' is also lime green. A thick blue swoosh curves around the letters from the bottom left to the top right. Below 'RTX', the words 'WIRELINE SERVICES' are written in a bold, black, sans-serif font.

RTX

WIRELINE SERVICES

Completions Operations Brochure

Professional Sales Team

- ***Jake Thon. 432.556.6458. jake.thon@rtxwireline.com***
- ***Avi Quinonez. 432.425.8830. avi.quinonez@rtxwireline.com***
- ***Johnny Garcia – 806.632.3812. johnny.Garcia@rtxwireline.com***
- ***Stuart Estes – 713.309.5731. stuart.estes@rtxwireline.com***
- ***Dave Canham. 719-680-6043. dave.canham@rtxwireline.com***

RTX Wireline, LLC

Completions Operations

“Your Local Wireline Partner”



In today's completion operations

It is essential to have a reputable wireline service partner. We have the capability to meet all your cased hole wireline needs. We are locally owned and operated and have a combined 100 years of experience in the wireline industry.

RTX Wireline, LLC
P.O. Box 60147
Midland, Texas
79711



Office: 432-653-1427
Fax: 432-561-8025
jake.thon@rtxwireline.com

Professional Wireline Services

RTX Wireline will provide all services listed below with an emphasis on reliability, and dependability.

To help ensure our clients that safety is a high priority, we have joined ISNetwork in an effort to bring safety to every location.

Logging Services

Compensated Neutron Logs	Gamma Ray Collar Locators
Dual Receiver Cement Bond Logs	Free Point Log
Gamma Ray Perforator	Stuck Pipe Logs
Radial Sector Bond Logs	Collar Locator Logs
Temperature Logs	Casing Inspection
Continuous North Seeking Gyro (1', 10', 25', 50', 100' Intervals)	
Spectral Gamma Ray CCL Logs	

Horizontal And Vertical Perforating & Pipe Recovery Services

EB Switched Perforating	Retrievable Tubing Guns
Addressable Switched Perforating	Expandable Scalloped Guns
Slick Guns	String Shot
Pipe Recovery Services	Jet Cutters
Chemical Cutters	Split Shot Cutter
Free Point Indicator (Magnetic & Centralized)	Tubing Conveyed Perforating (TCP)
Well Head Shot	Coil Tubing & Drill Pipe Recovery

Additional Wireline / Pressure Control Services

Bridge Plugs	Frac Plugs
Composite Plugs	High Pressure 5K/15K Grease Injection
Dump Bailers-Acid, Cement and Sand	Crane Services 28-50 Ton
Junk Baskets/Gauge Rings	Packer Setting
Total Depth Tagging's	Retainer Setting
5k And 10k Pressure Control Packages	Rig Lock
Tractor Conveyance	Guardian Release Tools
NCCO Certified Crane Operators	ISI Release Tools
	ISI Tension Tools



Health Safety and Environment

RTX Wireline is concerned about HSE

We are a active member in the ISN Safety Network

The long-term business success of RTX Wireline depends on our ability to continually improve the quality of our services and products while protecting people and the environment. Emphasis must be placed on ensuring human health, operational safety, environmental protection, quality enhancement, and community goodwill. This commitment is in the best interests of our customers, our employees and contractors, our shareholders, and the communities in which we live and work.

RTX requires the active commitment to, and accountability for, HSE from all employees and contractors. Line management has a leadership role in the communication and implementation of, and ensuring compliance with, HSE policies and standards.

We are HSE Committed

Protect, and strive for improvement of, the health, safety and security of our people at all times.

Eliminate Quality non-conformances and HSE accidents.

Meet specified customer requirements and ensure continuous customer satisfaction.

Set Quality & HSE performance objectives, measure results, assess and continually improve processes, services and product quality, through the use of an effective management system.

Plan for, respond to and recover from any emergency, crisis and business disruption.

Minimize our impact on the environment through pollution prevention, reduction of natural resource consumption and emissions, and the reduction and recycling of waste.

Apply our technical skills to all HSE aspects in the design and engineering of our services and products.

Communicate openly with shareholders and ensure an understanding of our HSE policies, standards, programs and performance.

Reward outstanding HSE performance.

Improve our performance on issues relevant to our shareholders that are of global concern and on which we can have an impact, and share with them our knowledge of successful HSE programs and initiatives.

This Policy shall be regularly reviewed to ensure ongoing suitability.

The commitments listed are in addition to our basic obligation to comply with **RTX Standards**, as well as all applicable laws and regulations where we operate. This is critical to our business success because it allows us to systematically minimize all losses and adds value for all our shareholders.



Team Building

RTX Plans on being a part of your Team

Well Completion should be a Team Effort

- RTX Wireline wants to be part of your Team
- Not just another Provider
- Planning
- Communication
- Understanding
- Performance
- Safety
- Completion
- Locally Owned and Operated

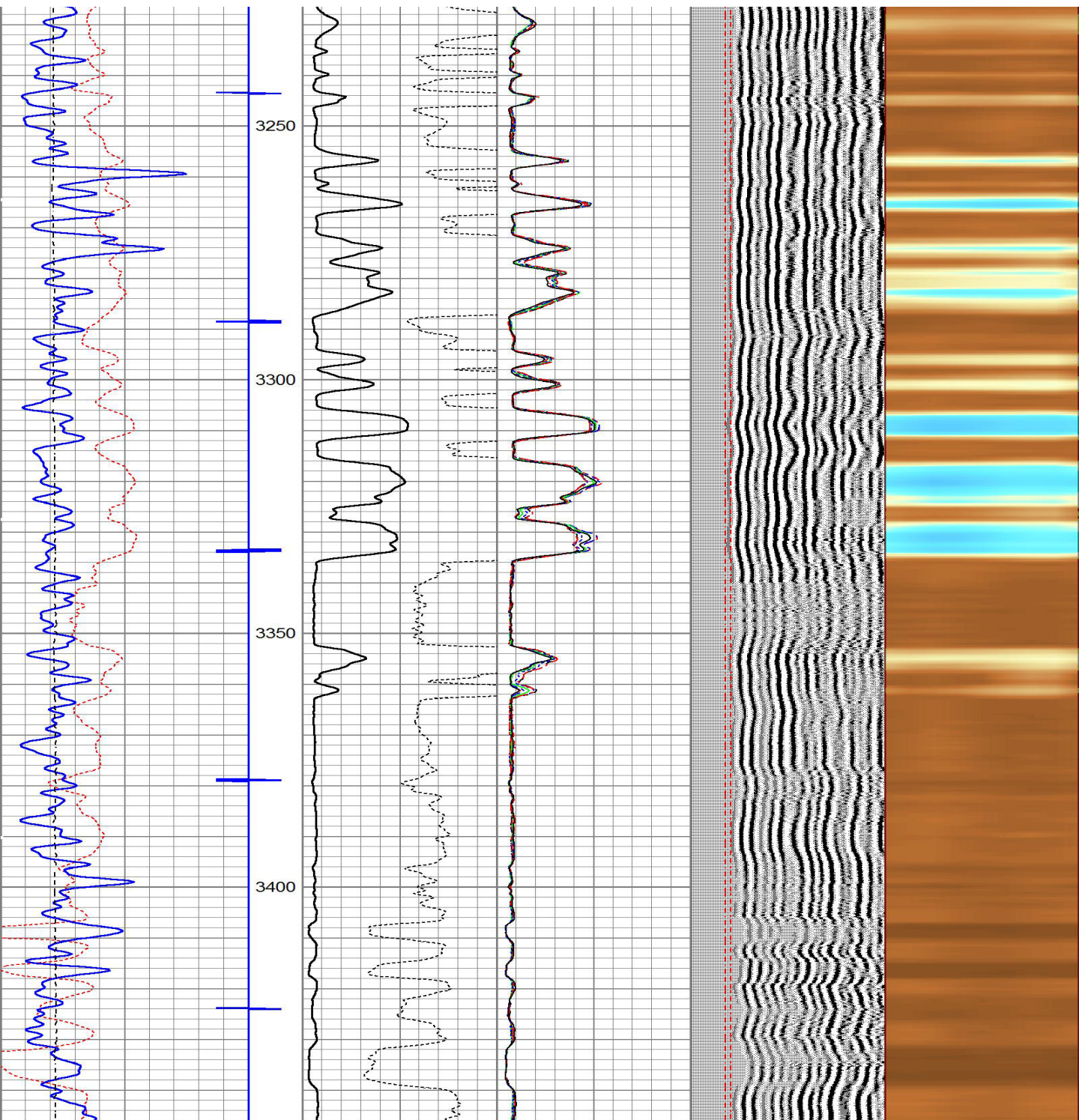


RTX Wireline, LLC

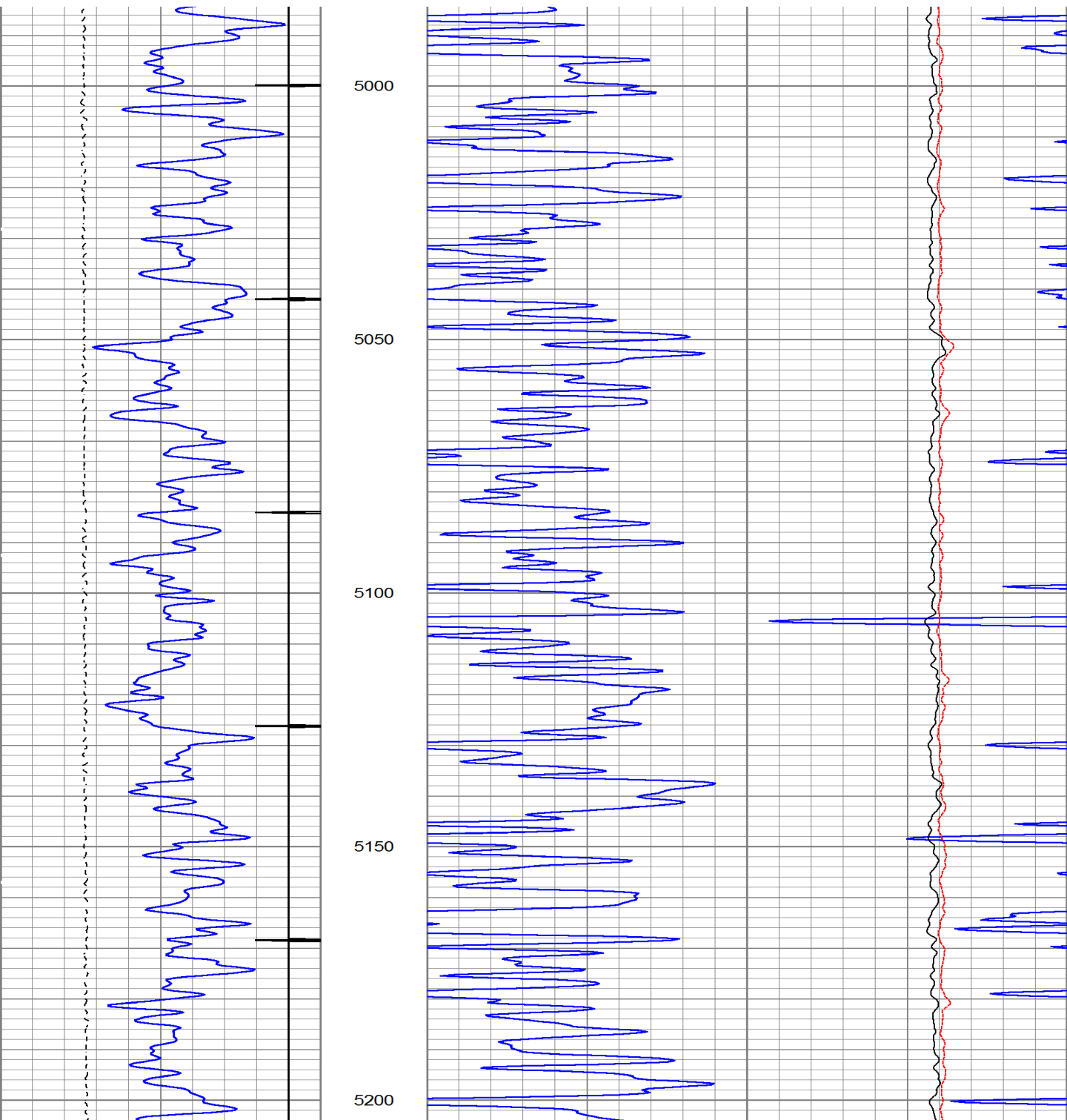
Example Logs



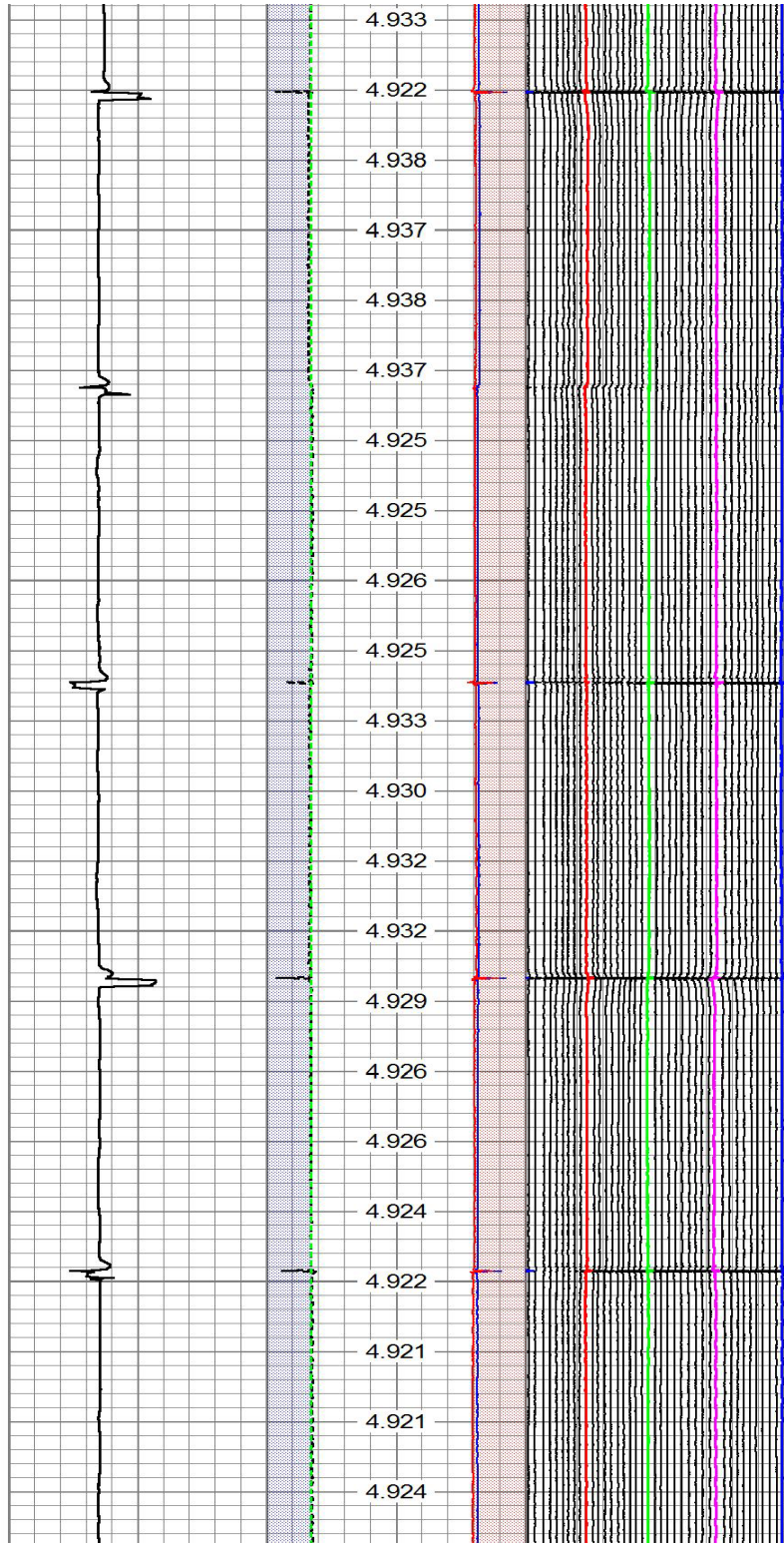
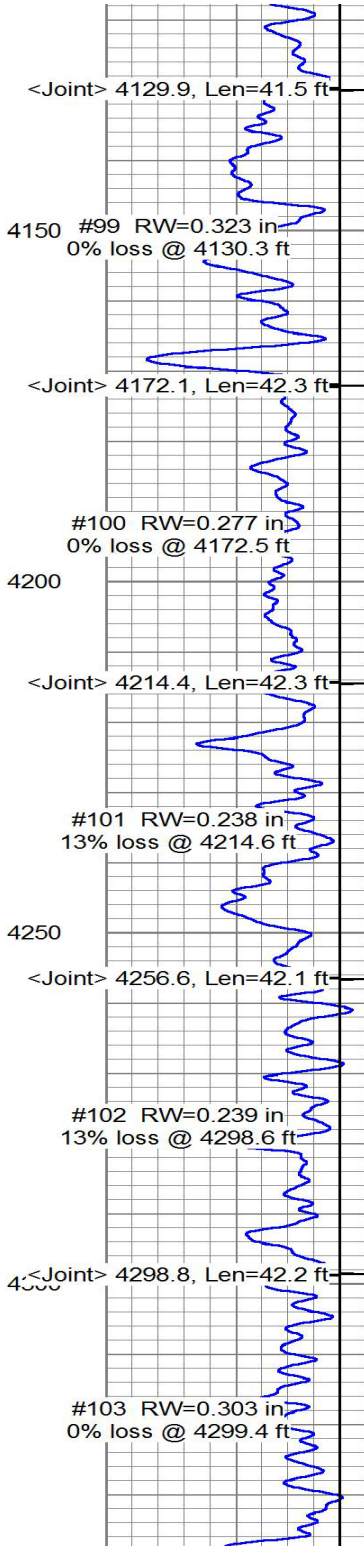
Radial Cement Bond Logs



Compensated Neutron Logs



Casing Inspection Logs



North Seeking Gyro

Date: 01-01-2015

Location:

S/N: 1311

Incline: Vertical

Units: Imperial

Coods: Local

Field: Spraberry

Well: # 3

Last Calibration: 5-12-2015

Grid Offset: 0.63

Latitude: 31.9999 N

Crew: Engineer

Operator: RTX Wireline, LLC

SW Vers: 1.246

Depth Input: Sensor

Start Depth: 0

N/S: 0'

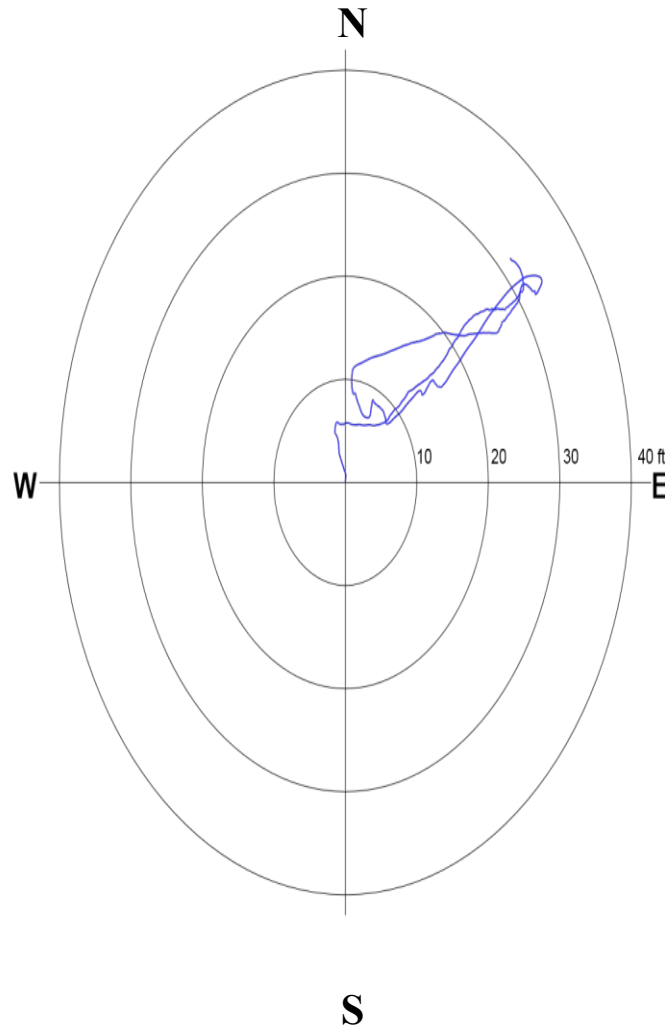
Bottom Depth: 10,670

E/W: 0'

TVD VS Distance



Top View



North Seeking Gyro

Date: 01-01-2015

Location:

S/N: 1311

Incline: Vertical

Units: Imperial

Coods: Local

Field: Spraberry

Well: # 3

Last Calibration: 5-12-2015

Grid Offset: 0.63

Latitude: 31.9999 N

Crew: Engineer

Operator: RTX Wireline, LLC

SW Vers: 1.246

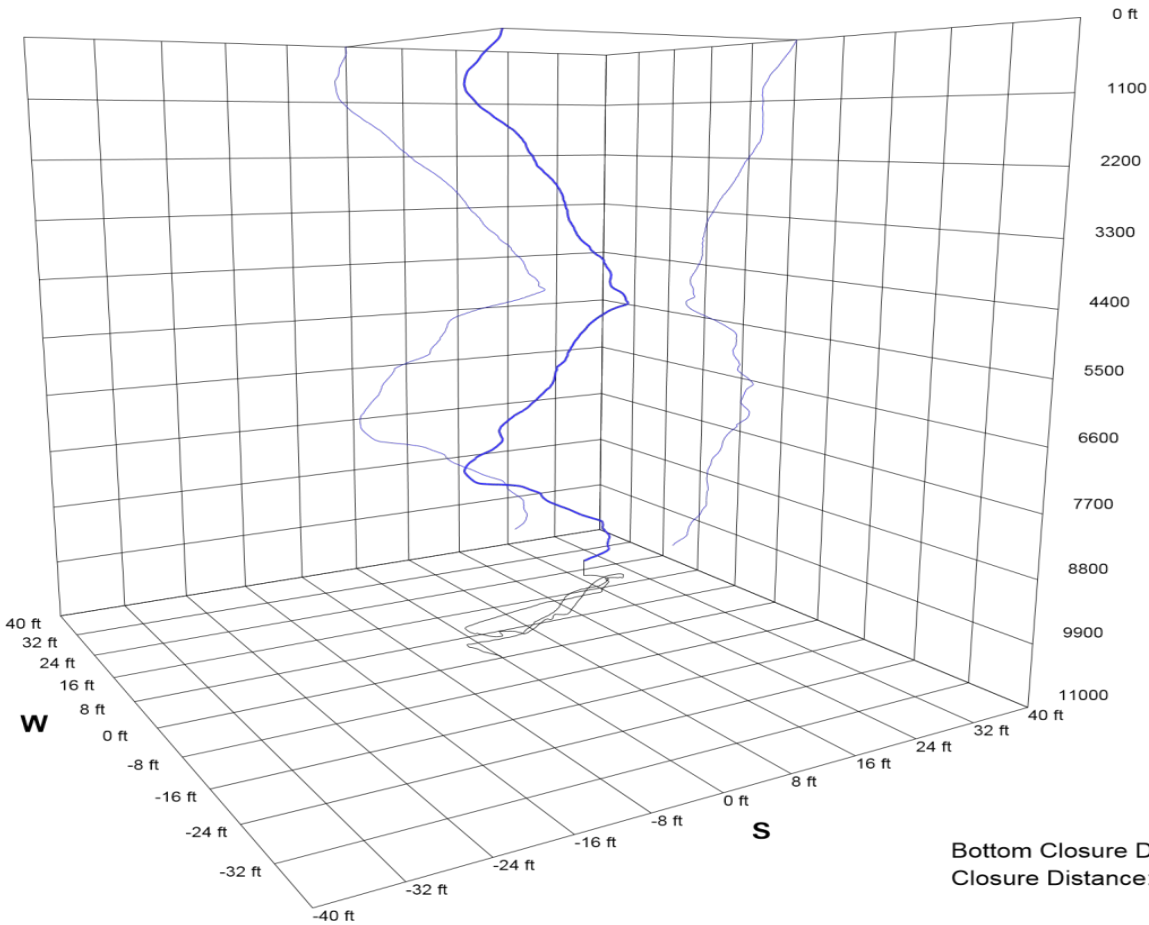
Depth Input: Sensor

Start Depth: 0 **Bottom Depth:** 10,670

N/S: 0'

E/W: 0'

3D View



Management Team

- **Debra Belt – Administration / Accounting**
Office: 432-653-1427 Email: d.belt@rtxwireline.com

- **Ted Edwards – Safety**
Office: 432-230-9920 Email: ted.edwards@rtxwireline.com

- **Mike Lewter – General Manager**
Cell: 432-234- 2433 Email: mike.lewter@rtxwireline.com

- **Avi Quinonez – Account Manager**
Cell: 432-425-8830 Email: avi.quinonez@rtxwireline.com

- **Stuart Estes – Account Manager**
Cell: 713-309-5731 Email: stuart.estes@rtxwireline.com

- **Dave Canham – Account Manager**
Cell: 719-680-6043 Email: dave.canham@rtxwireline.com

- **Tony Mullins – DOT**
Cell: 817-235-7026 Email: tony.mullins@rtxwireline.com

- **Cooper Cogdill – Operations Manager**
Cell: 432-488-7256 Email: cooper.cogdill@rtxwireline.com

- **Ethan June – District Manager**
Cell: 817-343-8534 Email: ethan.june@rtxwireline.com

- **Jake Thon – COO**
Cell: 432-556-6458 Email: jake.thon@rtxwireline.com



RTX Wireline, LLC

Completions Operation

Mission Statement

RTX's mission is to be the company of choice for an extensive range of wireline products, services and technologies that will help our customers produce oil and gas more efficiently and profitably. RTX will continuously strive to provide the highest degree of quality down hole services to our customers. It is the policy of the company to be in compliance with all applicable laws and regulations within the areas of our operation, to conduct all operations in a manner that promotes safe work practices and avoids risk to our employees, our neighbors, our customers, and the environment.



RTX Wireline, LLC

Completions Operations

Your Partner in Safety

RTX Wireline, LLC

Mailing Address

**P.O. Box 60147
Midland, Texas
79711**

Physical Address

**12109 WCR-125
Odessa, Texas
79765**

Office: 432-653-1427

Fax: 432-561-8025

Jake.thon@rtxwireline.com

